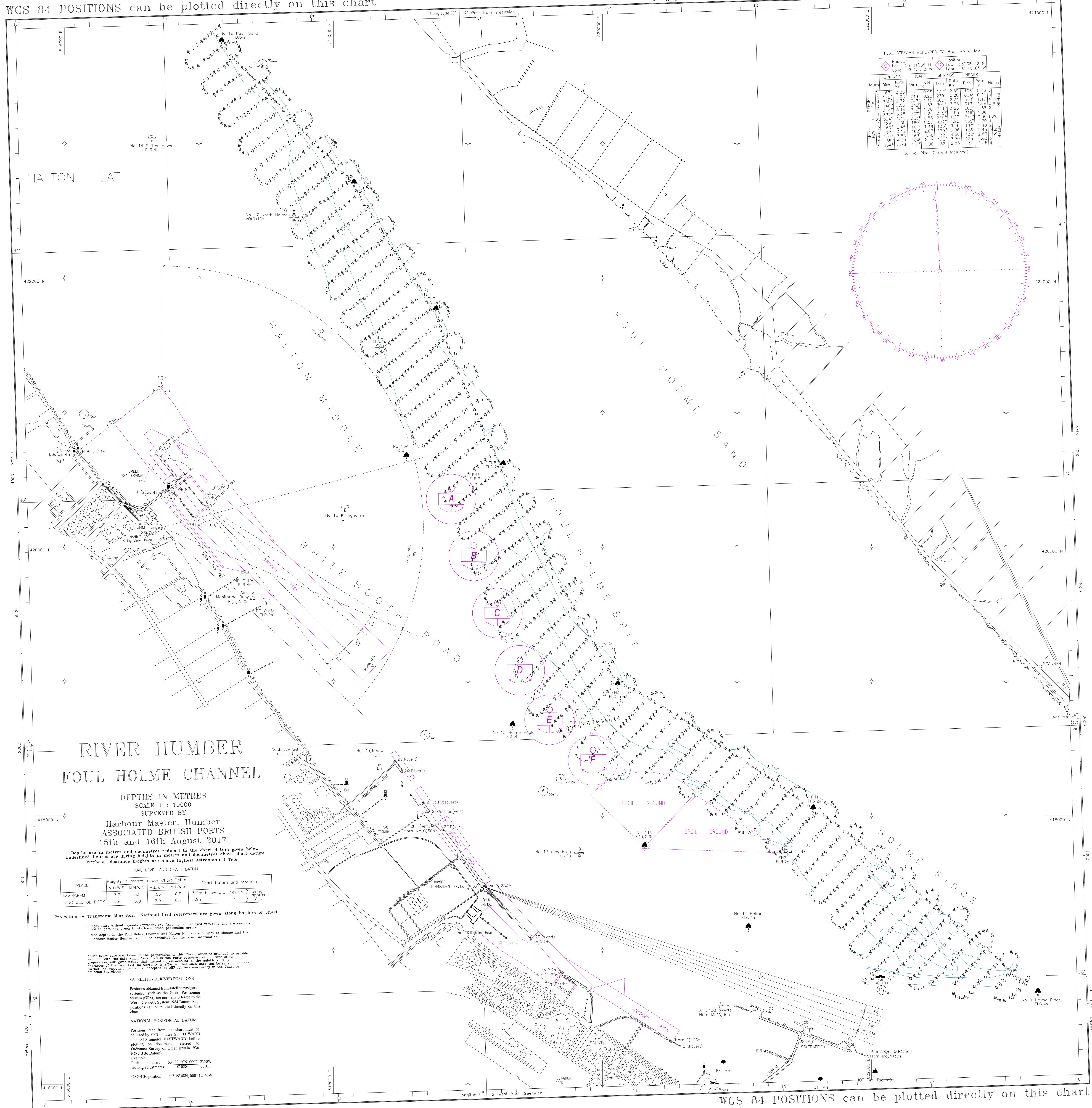


WGS 84 POSITIONS can be plotted directly on this chart

© Copyright 2017. All rights reserved. No part of this product may be reproduced in any form (including photocopying or by electronic means) without prior permission.



TIDAL STREAMS REFERRED TO H.W. IMMINGHAM

Position	SPRINGS				NEAPS			
	Lat.	Long.	Rate	Dirn	Lat.	Long.	Rate	Dirn
53° 41' 35" N 07 13' 43" W	53° 36' 22" N 07 10' 45" W	3.25	177°	0.96	2.59	106°	0.76	0°
3.25	1.08	2.49	0.22	2.39	0.20	0.04	0.21	51°
3.55	2.32	3.43	1.15	3.03	2.24	3.10	1.14	44°
3.40	3.03	3.49	1.53	3.05	3.25	3.13	1.68	31°
3.44	3.14	3.43	1.76	3.14	3.23	3.08	1.68	21°
3.37	3.26	3.33	1.28	3.15	2.98	3.19	1.08	11°
H.W.	3.24	1.41	3.53	0.53	3.19	1.27	3.41	0.30
1.29	1.05	1.60	0.57	1.27	1.25	1.36	1.40	0.70
1.60	2.45	1.61	1.48	1.33	3.28	1.34	1.40	0.70
1.58	3.12	1.62	2.07	1.29	3.96	1.28	2.43	0.70
1.57	3.85	1.63	2.38	1.37	4.36	1.32	2.82	0.70
1.56	4.30	1.64	2.47	1.35	3.50	1.33	2.62	0.70
1.64	3.78	1.67	1.88	1.32	2.86	1.30	2.52	0.70

(Normal River Current Included)

# RIVER HUMBER FOUL HOLME CHANNEL

DEPTHS IN METRES  
SCALE 1 : 10000  
SURVEYED BY

Harbour Master, Humber  
ASSOCIATED BRITISH PORTS  
15th and 16th August 2017

Depths are in metres and decimetres reduced to the chart datum given below  
Underlined figures are drying heights in metres and decimetres above chart datum  
Overhead clearance heights are above Highest Astronomical Tide

TIDAL LEVEL AND CHART DATUM

PLACE	Heights in metres above Chart Datum				Chart Datum and remarks
	M.H.W.S.	M.H.W.N.	M.L.W.N.	M.L.W.S.	
IMMINGHAM	7.3	5.8	2.6	0.9	3.9m below O.D. Newlyn } Being approx. LAT.
KING GEORGE DOCK	7.6	6.0	2.5	0.7	3.9m - - - - -

Projection :- Transverse Mercator. National Grid references are given along borders of chart.

- Light stars without legends represent two fixed lights displayed vertically and are seen as red to port and green to starboard when proceeding upriver.
- The depths in the Foul Holme Channel and Halton Middle are subject to change and the Harbour Master Humber should be consulted for the latest information.

Whilst every care was taken in the preparation of this Chart, which is intended to provide Mariners with the data which is current at the time of the preparation, ABP gives notice that thereafter, on account of the quickly shifting character of the river bed, no warranty is afforded that such data can be relied upon and, further, no responsibility can be accepted by ABP for any inaccuracy in the Chart or omission therefrom.

**SATELLITE-DERIVED POSITIONS**

Positions obtained from satellite navigation systems, such as the Global Positioning System (GPS), are normally referred to the World Geodetic System 1984 Datum. Such positions can be plotted directly on this chart.

**NATIONAL HORIZONTAL DATUM**

Positions read from this chart must be adjusted by 0.02 minutes SOUTHWARD and 0.10 minutes EASTWARD before plotting on documents referred to Ordnance Survey of Great Britain 1936 (OSGB 36 Datum).  
Example:  
Position on chart 53° 39' 50N, 000° 12' 50W  
Lacking adjustments 0.02S 0.10E  
OSGB 36 position 53° 39' 48N, 000° 12' 40W

WGS 84 POSITIONS can be plotted directly on this chart